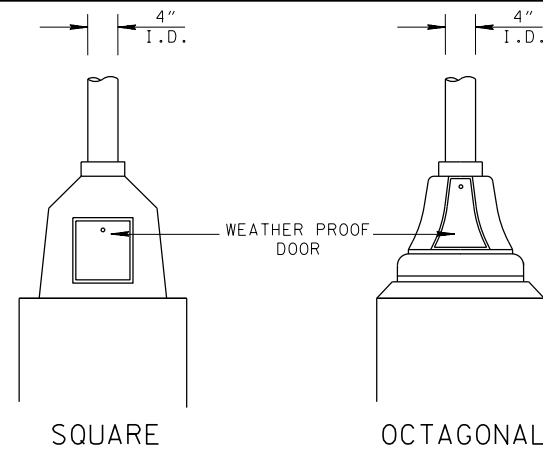
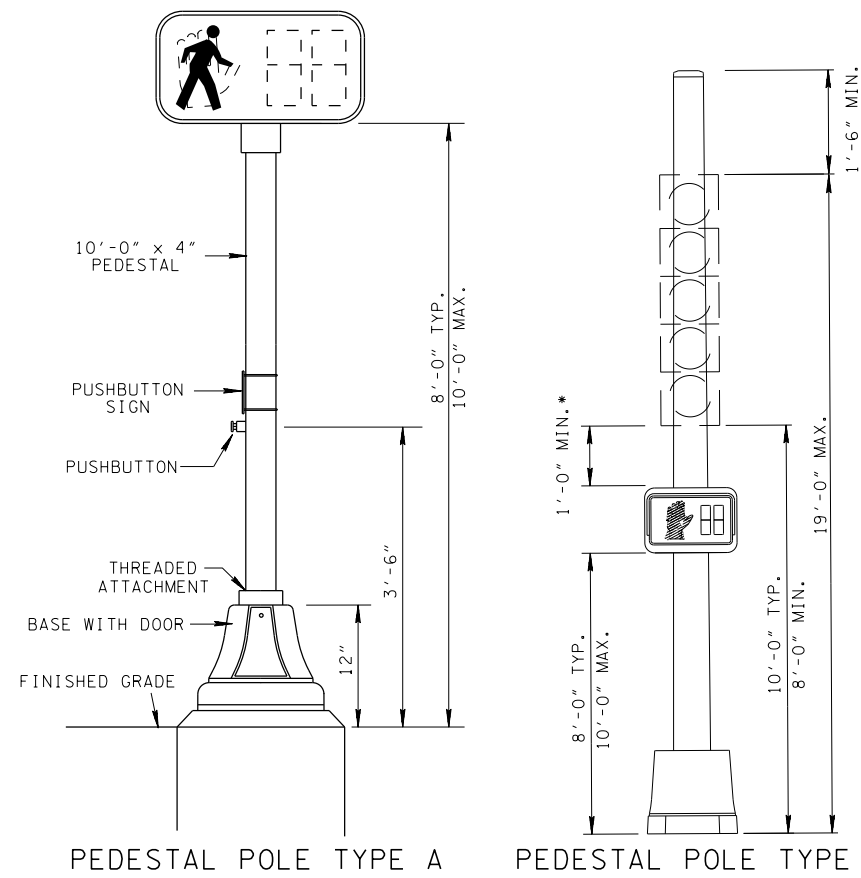


23-AUG-2016 14:40 \\VA035DCWF00008.net.ads.state.tn.us\USSHARED\Traffic Operations Division\Traffic\DESIGN\Standard Drawings\Signals\TS66-000000.dgn



CAST PEDESTAL BASE ALTERNATES

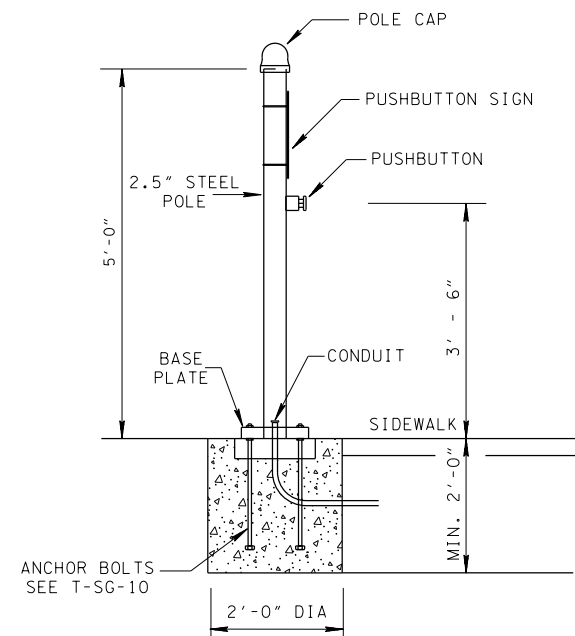


FOR PEDESTAL POLE FOOTING
SEE 2' DIAMETER FOOTING ON T-SG-10

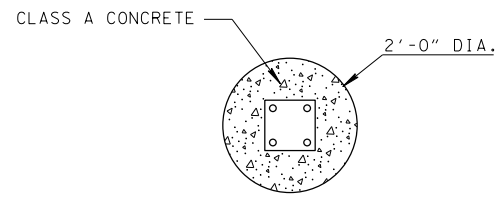
* IF PEDESTRIAN DISPLAYS ARE PROVIDED ON
SAME POLE, THE MINIMUM HEIGHT OF THE
VEHICULAR DISPLAY SHALL BE AT LEAST ONE
FOOT ABOVE THE TOP OF THE PEDESTRIAN
DISPLAY, HOUSING, AND BRACKETS.

PEDESTRIAN GENERAL NOTES

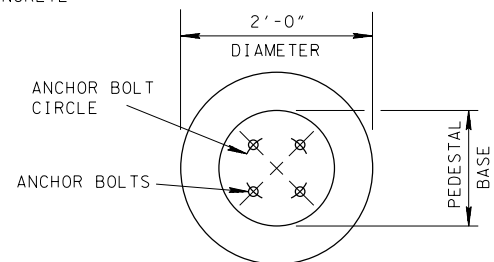
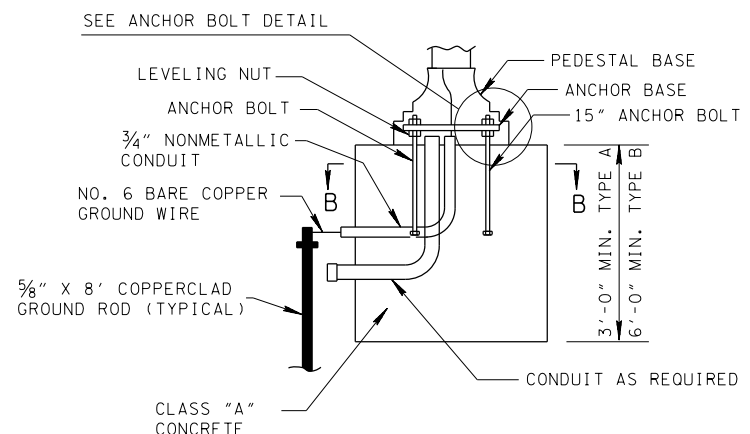
- WHERE PEDESTRIAN SIGNAL HEADS ARE PROVIDED AT PEDESTRIAN STREET CROSSINGS, THEY SHALL INCLUDE ACCESSIBLE PEDESTRIAN SIGNALS AND PEDESTRIAN PUSHBUTTONS COMPLYING WITH SECTIONS 4E.08 THROUGH 4E.13 OF THE MUTCD (INCORPORATED BY REFERENCE, SEE R104.2). OPERABLE PARTS SHALL COMPLY WITH R403.
 - PUSHBUTTONS AT SIGNALIZED CROSSWALKS SHALL INCORPORATE A LOCATOR TONE MEETING THE REQUIREMENTS OF MUTCD SECTION 4E.12, SUBSECTION 04 THROUGH 06. AN ACCESSIBLE PEDESTRIAN SIGNAL AND PEDESTRIAN PUSHBUTTON IS AN INTEGRATED DEVICE THAT COMMUNICATES INFORMATION ABOUT THE WALK AND DON'T WALK INTERVALS AT SIGNALIZED INTERSECTIONS IN NON -VISUAL FORMATS (I.E. AUDIBLE TONES AND VIBROTACTILE SURFACES) TO PEDESTRIANS WHO ARE BLIND OR HAVE LOW VISION.
 - PEDESTRIAN PUSHBUTTON SHALL PROVIDE TACTILE VIBRATING ARROW BUTTON AND AUDIBLE SOUND.
 - THE COST OF PEDESTRIAN PUSHBUTTON SHALL INCLUDE THE FRAME, SIGN, ADA COMPLIANT PUSHBUTTON, AND MOUNTING HARDWARE.
- 730-26.11 COUNTDOWN PEDESTRIAN SIGNAL HEAD W/ AUDIBLE
PUSHBUTTON & 15" SIGN



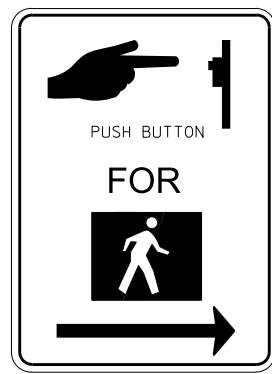
PEDESTRIAN PUSHBUTTON POST



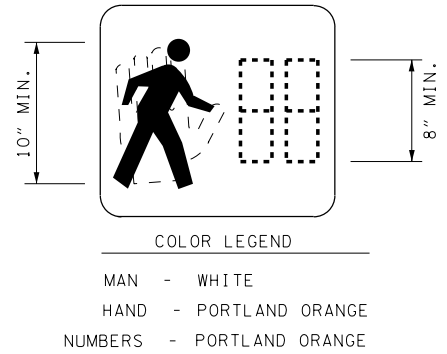
FOUNDATION DETAIL
PEDESTRIAN PUSHBUTTON POST



SECTION B-B
FOUNDATION DETAIL FOR STEEL
PEDESTAL POLE
TYPE A

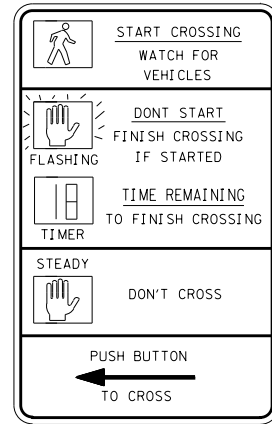


R10-3 (9"x12")

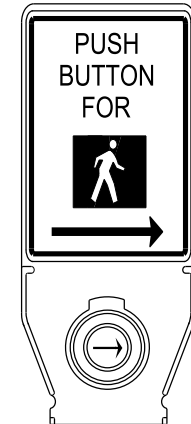


COUNTDOWN PEDESTRIAN
CROSSWALK SIGNAL

NOTE: SEE SECTION 4E.07
OF THE MUTCD FOR
ADDITIONAL INFORMATION.



R10-3E (9"x15")



R10-3 (MOD.) (5.44"x14.09")

PEDESTRIAN PUSHBUTTON SIGNS
LEFT & RIGHT

LEGEND - WHITE "WALK" (FIGURE) ON BLACK
ORANGE "DON'T WALK" (HAND) ON BLACK
ALL ELSE BLACK
BACKGROUND - WHITE (REF.)
LOCATION - IMMEDIATELY ABOVE PUSHBUTTON

MATERIAL - TYPE II REFLECTIVE SHEETING
1) MOUNTED ON 0.064" MINIMUM
THICK FLAT SHEET ALUMINUM AND
BANDED TO WOOD POLES, STEEL
POLES, OR PEDASTAL POLES.